

MONTHLY MEMBERSHIP PROGRESS REPORT

LOCATION INDIA

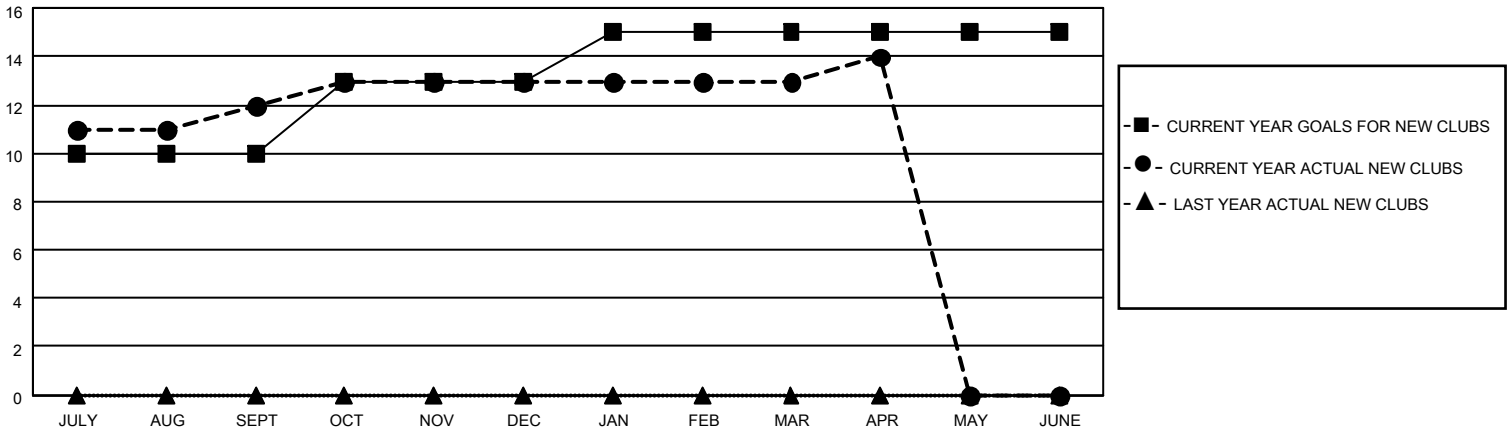
District 322 F

Results as of: 4/30/2023

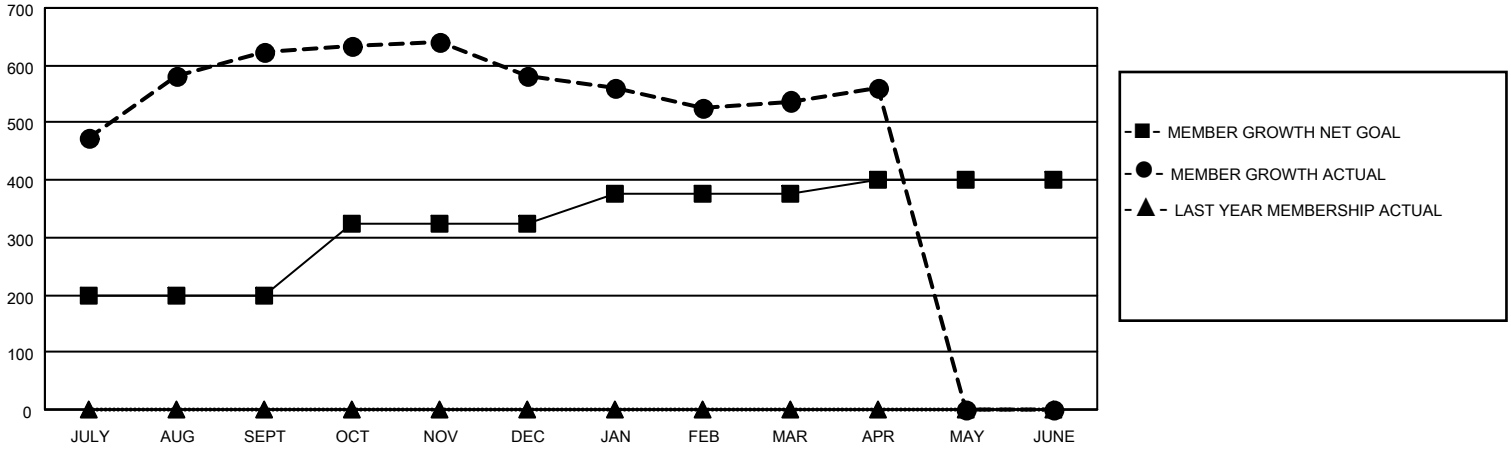
Clubs			
RESULTS FOR 2022-2023			
QUARTER	NEW CLUB GOAL	NEW CLUBS	DROPPED CLUBS
JULY/AUG/SEPT	10	12	0
OCT/NOV/DEC	3	1	3
JAN/FEB/MAR	2	0	2
APR/MAY/JUNE	0	1	0

Members			
RESULTS FOR 2022-2023			
QUARTER	MEMBER GROWTH NET GOAL	MEMBER GROWTH ACTUAL	DROPPED MEMBERS ACTUAL (including transfers)
JULY/AUG/SEPT	200	672	45
OCT/NOV/DEC	125	71	108
JAN/FEB/MAR	50	79	92
APR/MAY/JUNE	25	32	8

GOALS AND ACTUAL NEW CLUBS CUMULATIVE



GOALS AND ACTUAL MEMBERS CUMULATIVE



DROPPED CLUBS: 5

80 CLUBS OF 114 ADDED 1 OR MORE NEW MEMBERS

GENDER DISTRIBUTION

DROPPED MEMBERS

DECEASED	4
CLUB CANCELLED	96
OTHER	153
TOTAL	253

[CLICK HERE FOR CUMULATIVE MEMBERSHIP DATA](#)

MALE	2,714 (69.61%)
FEMALE	1,185 (30.39%)
NON BINARY	0 (0.00%)
PREFER NOT TO ANSWER	0 (0.00%)

TOTAL FAMILY UNIT MEMBERS 1,857

FAMILY MEMBERS PAYING HALF DUES 1,221